

SPECIFICATIONS

Seating:	6-7 Person
Dimensions in inches:	90" X 90" X 39"
Dimensions in centimeters:	228 cm x 228 cm x 99 cm
Dry Weight:	900 lbs / 408 kg
Filled Weight (Spa Volume):	4,161 lbs / 1,888 kg
Water Capacity (Spa Volume):	391 US gallons / 1,480 L
Electronic Controls:	GECKO K1000 Spa Keypad (7005088)
Massage Selectors:	2
Air Controls:	2
Water Management System:	(1) 50 SQ FT Skim Side Filter (1) 75 SQ FT Pressure Side Filter
LED Lighting:	(1) Self Clean Plate with 20 LED lights
Synthetic Cabinet Options:	Vintage, Linen Grey, Warm Walnut
Acrylic Options:	Alpine Mist, Black Opal, Cosmic Swirl, Midnight Canyon, Misty Mountain, Pure White & Silver Marble
Headrests:	(4) Signature Lounge Pillows (8515076)
Electrical Requirements:	North America (60 Hz): 240 Volts, 40 Amps GFCI RATED: 50 Amps Europe (50 Hz): 230 Volts, 16 Amps (or suitably rated circuit breaker to comply with local electrical codes. RCD breakers with MC
Warranty:	10/5/3 Year Limited



PACKAGE OPTIONS

OASIS PACKAGE INCLUDES:

- Deluxe LED & Radiant Lighting
 - Includes 3 additional 20 LED small lights and Radiant perimeter lighting.
- Two Premium Hydrofall Pillows
 - Includes 2 pillow waterfalls plus on/off valve control illuminated.

SMART TUB PACKAGE INCLUDES:

- Smart Tub Module
 - WIFI module to interface with the Smart Tub App to monitor and control remotely.
- Smart Tub App
 - Includes 6 months of fees at no cost to the consumer.

NORTHERN FALLS PACKAGE INCLUDES:

- Cascading Hydrofalls
 - Includes 3 laminar waterfalls plus on/off valve control.
- Northern Lights
 - Includes 2 LED cupholders and all other topside control valves illuminated.



OTHER OPTIONS & SPECIAL FEATURES**HYDROTHERAPY OPTIONS:**

- Hydroflex Air Therapy System (includes)
 - 600-Watt Heated Blower
 - Round Keypad Controller
 - Variable Speed Control Box
 - Mani-SD Check Valve
- Thera-Jet

LIGHTING OPTIONS:

- Radiant Lighting (includes)
 - Perimeter LED lighting with LED badge on each panel.
- Deluxe LED & Radiant Lighting (includes)
 - 3 additional 20 LED small lights and radiant perimeter lighting.
 - Perimeter LED lighting with LED badge on each panel.
- Two Premium Hydrofall Pillows
 - Includes 2 pillow waterfalls plus on/off valve control illuminated.

OTHER POPULAR UPGRADES & OPTIONS:

- Two Tier Universal Step
- Auxiliary Heat Pump Bypass System
- Ice Bucket Tray

WATER MANAGEMENT OPTIONS:

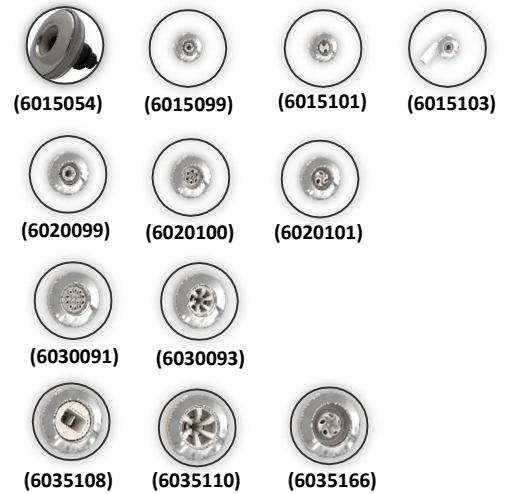
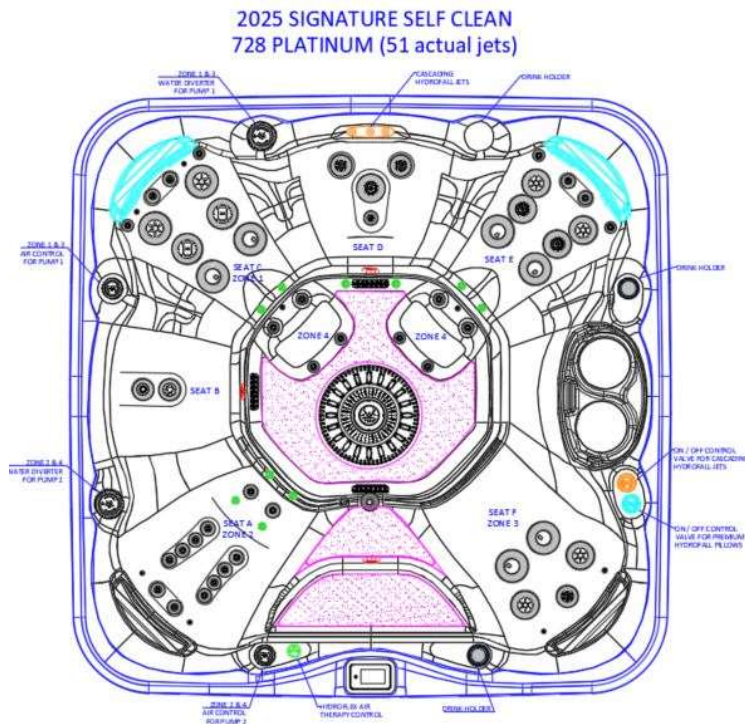
- EZ-Pure Ozone System (includes)
 - UV Ozonator with check valve and mixing chamber.
 - **(Must delete Pure Water System if ordered separately).**
- Pure Water System (includes)
 - UV Water Sanitizer and integrated ozone injection system.

COVERS:

- Custom Hydrowise Insulating Cover Colour
- Opposite Fold Hardcovers
- Cover Remover Standard
- Cover Remover Low Profile (Undermount)
- Cover Remover Plus (Hydraulic)



MASSAGE SELECTOR/AIR CONTROL DIAGRAM



Seat Depth:

- A = 27.78" (70.60 cm)
- B = 24.88" (63.20 cm)
- C = 28.26" (71.80 cm)
- D = 24.88" (63.20 cm)
- E = 26.58" (67.50 cm)
- F = 27.30" (69.30 cm)

LISTED DIMENSIONS REPRESENT DISTANCE FROM THE TOP OF
ACRYLIC TO LOWEST POINT IN THE SEAT TOLERANCE $\pm 1/16"$ (0.159 CM)

PUMPS AND JETS

Circ Pump

North America (60 Hz): 240V, 0.8/1A, 50/60 Hz **(6505171)**
Europe (50Hz): 230V, 0.8/1A, 50/60 Hz **(6505171)**

Pump 1

North America (60 Hz): 2SP, 4HP, 12.0/1.0 AMPS **(6505155)**
Europe (50 Hz): 2SP, 4HP, 10.0/1.0 AMPS **(6510049)**

Pump 2

North America (60 Hz): 1SP, 3HP, 8.0/3.0 AMPS **(6505161)**
Europe (50 Hz): 1SP, 3HP, 8.6 AMPS **(6510039)**

Air Control: (2) – 1" Air Control **(4525235)**

2" Water Diverter:

2 – 2" Diverter Valve Stem Assembly **(4525240)**
2 – 2" Diverter Wall Fitting **(4525241)**

Filters: (1) 50 SQ FT Low Pressure Filter **(4520043)**
(1) 75 SQ FT High Pressure Filter **(4520044)**

51 Total Jets:

- 4 – WATERWAY SHOULDER JET – 100% SHUT OFF **(6015054)**
- 14 – 2" LAS GROMMET STYLE– DIRECTIONAL **(6015099)**
- 1 – 2" LAS GROMMET STYLE – MULTI ROTO **(6015101)**
- 10 – 1" LAS GROMMET STYLE – OZONE CLUSTER **(6015103)**
- 1 – 3" LAS GROMMET STYLE – DIRECTIONAL **(6020099)**
- 3 – 3" LAS GROMMET STYLE – MASSAGE **(6020100)**
- 1 – 3" LAS GROMMET STYLE – MULTI ROTO **(6020101)**
- 3 – 4 3/8" LAS GROMMET STYLE – MASSAGE **(6030091)**
- 4 – 4 3/8" LAS GROMMET STYLE – VORTEX **(6030093)**
- 2 – 5" LAS GROMMET STYLE – WAVE **(6035108)**
- 2 – 5" LAS GROMMET STYLE – VORTEX **(6035110)**
- 6 – 5" LAS GROMMET STYLE – SINGLE ROTO **(6035166)**

Spa Pack and Heater:

Heater – 4 KW 240 V (NA) & 3 KW 230V (EU)
Controller – GECKO IN.YE-6-V3 (NA/EU)

