

## SPECIFICATIONS

<b>Seating:</b>	5-6 Person
<b>Dimensions in inches:</b>	84" X 84" X 39"
<b>Dimensions in centimeters:</b>	213 cm x 213 cm x 99 cm
<b>Dry Weight:</b>	882 lbs / 400 kg
<b>Filled Weight (Spa Volume):</b>	3,559 lbs / 1,615 kg
<b>Water Capacity (Spa Volume):</b>	321 US gallons / 1,215 L
<b>Electronic Controls:</b>	GECKO K1000 Spa Keypad (7005088)
<b>Massage Selectors:</b>	1
<b>Air Controls:</b>	1
<b>Water Management System:</b>	(1) 50 SQ FT Skim Side Filter (1) 75 SQ FT Pressure Side Filter
<b>LED Lighting:</b>	(1) Self Clean Plate with 20 LED lights
<b>Synthetic Cabinet Options:</b>	Vintage, Linen Grey, Warm Walnut
<b>Acrylic Options:</b>	Alpine Mist, Black Opal, Cosmic Swirl, Midnight Canyon, Misty Mountain, Pure White & Silver Marble
<b>Headrests:</b>	(4) Signature Lounge Pillows (8515076)
<b>Electrical Requirements:</b>	<b>North America (60 Hz):</b> 240 Volts, 32 Amps GFCI RATED: 40 Amps <b>Europe (50 Hz):</b> 230 Volts, 16 Amps (or suitably rated circuit breaker to comply with local electrical codes. RCD breakers with MC
<b>Warranty:</b>	10/5/3 Year Limited



## PACKAGE OPTIONS

### OASIS PACKAGE INCLUDES:

- Deluxe LED & Radiant Lighting
  - Includes 3 additional 20 LED small lights and Radiant perimeter lighting.
- Two Premium Hydrofall Pillows
  - Includes 2 pillow waterfalls plus on/off valve control illuminated.

### SMART TUB PACKAGE INCLUDES:

- Smart Tub Module
  - WIFI module to interface with the Smart Tub App to monitor and control remotely.
- Smart Tub App
  - Includes 6 months of fees at no cost to the consumer.

### NORTHERN FALLS PACKAGE INCLUDES:

- Cascading Hydrofalls
  - Includes 3 laminar waterfalls plus on/off valve control.
- Northern Lights
  - Includes 2 LED cupholders and all other topside control valves illuminated.



**OTHER OPTIONS & SPECIAL FEATURES****HYDROTHERAPY OPTIONS:**

- Hydroflex Air Therapy System (includes)
  - 600-Watt Heated Blower
  - Round Keypad Controller
  - Variable Speed Control Box
  - Mani-SD Check Valve
- Thera-Jet

**LIGHTING OPTIONS:**

- Radiant Lighting (includes)
  - Perimeter LED lighting with LED badge on each panel.
- Deluxe LED & Radiant Lighting (includes)
  - 3 additional 20 LED small lights and radiant perimeter lighting.
  - Perimeter LED lighting with LED badge on each panel.
- Two Premium Hydrofall Pillows
  - Includes 2 pillow waterfalls plus on/off valve control illuminated.

**OTHER POPULAR UPGRADES & OPTIONS:**

- Two Tier Universal Step
- Auxiliary Heat Pump Bypass System
- Ice Bucket Tray

**WATER MANAGEMENT OPTIONS:**

- EZ-Pure Ozone System (includes)
  - UV Ozonator with check valve and mixing chamber.
  - **(Must delete Pure Water System if ordered separately).**
- Pure Water System (includes)
  - UV Water Sanitizer and integrated ozone injection system.

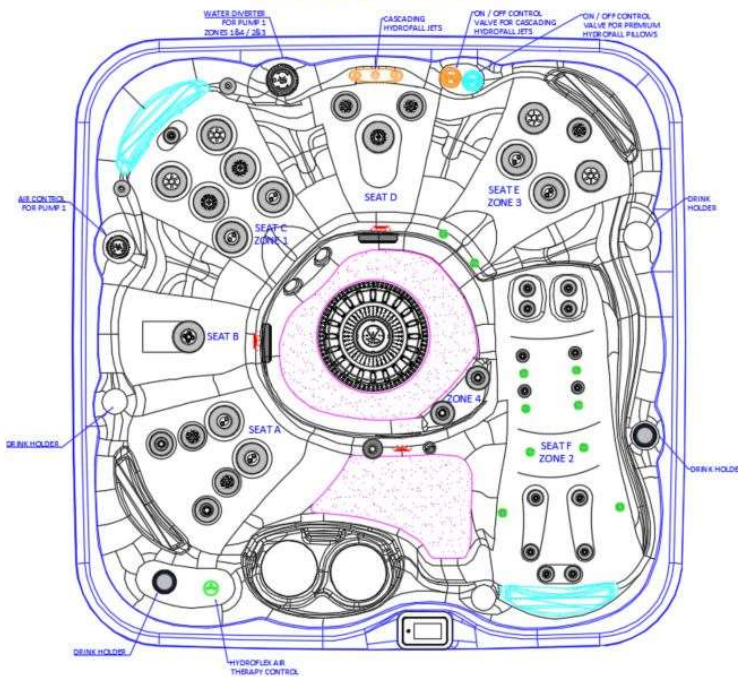
**COVERS:**

- Custom Hydrowise Insulating Cover Colour
- Opposite Fold Hardcovers
- Cover Remover Standard
- Cover Remover Low Profile (Undermount)
- Cover Remover Plus (Hydraulic)



**MASSAGE SELECTOR/AIR CONTROL DIAGRAM**

2025 SIGNATURE SELF CLEAN  
655 GOLD (40 actual jets)



**Seat Depth:**

- A = 26.25" (66.70 cm)
- B = 25.87" (65.70 cm)
- C = 28.26" (71.80 cm)
- D = 24.89" (63.20 cm)
- E = 25.00" (63.50 cm)
- F = 25.50" (90.00 cm)

**LISTED DIMENSIONS REPRESENT DISTANCE FROM THE TOP OF  
ACRYLIC TO LOWEST POINT IN THE SEAT TOLERANCE  $\pm 1/16"$  (0.159 CM)**

**PUMPS AND JETS**

**Circ Pump**

North America (60 Hz): 240V, 0.8/1A, 50/60 Hz **(6505171)**  
Europe (50Hz): 230V, 0.8/1A, 50/60 Hz **(6505171)**

**Pump 1**

North America (60 Hz): 2SP, 4HP, 12.0/1.0 AMPS **(6505155)**  
Europe (50 Hz): 2SP, 4HP, 12.7/1.0 AMPS **(6510054)**

**Air Control:** (1) – 1" Air Control **(4525235)**

**2" Water Diverter:**

1 – 2" Diverter Valve Stem Assembly **(4525240)**  
1 – 2" Diverter Wall Fitting **(4525241)**

**Filters:** **(1)** 50 SQ FT Low Pressure Filter **(4520043)**  
**(1)** 75 SQ FT High Pressure Filter **(4520044)**

**40 Total Jets:**

- 2 – SHOULDER JETS – 100% SHUT OFF **(6015054)**
- 11 – 2" LAS GROMMET STYLE– DIRECTIONAL **(6015099)**
- 4 – 1" LAS GROMMET STYLE – OZONE CLUSTER **(6015103)**
- 4 – 3" LAS GROMMET STYLE – DIRECTIONAL **(6020099)**
- 5 – 3" LAS GROMMET STYLE – MASSAGE **(6020100)**
- 6 – 4 3/8" LAS GROMMET STYLE – DOUBLE ROTO **(6030088)**
- 1 – 4 3/8" LAS GROMMET STYLE – MULTI ROTO **(6030089)**
- 3 – 4 3/8" LAS GROMMET STYLE – MASSAGE **(6030091)**
- 4 – 4 3/8" LAS GROMMET STYLE – VORTEX **(6030093)**

**Spa Pack and Heater:**

Heater – 4 KW 240 V (NA) & 3 KW 230V (EU)  
Controller – GECKO IN.YE-3-V3 (NA/EU)

